

# **Estes Park Health**

## **2020 Community Health Needs Assessment and Implementation Strategy**

**Estes Park Health**

**May 12, 2021**

## Table of Contents

Page

|    |                                                                                               |
|----|-----------------------------------------------------------------------------------------------|
| 2  | Table of Contents                                                                             |
| 3  | Executive Summary                                                                             |
| 3  | Overview of the Estes Park Health 2020 Community Health Needs Assessment                      |
| 3  | Estes Park Health 2020 Community Health Needs Assessment Limitations                          |
| 4  | Estes Park Health Organization Description                                                    |
| 4  | Estes Valley Community Description                                                            |
| 4  | Estes Park Health 2020 Community Health Needs Assessment Methods                              |
| 5  | Estes Valley Demographics                                                                     |
| 6  | Age                                                                                           |
| 6  | Veteran Status                                                                                |
| 6  | Ethnicity                                                                                     |
| 7  | Socioeconomic Status                                                                          |
| 7  | Insurance Status                                                                              |
| 7  | Estes Valley Health and Wellness Status                                                       |
| 8  | General Health                                                                                |
| 8  | Behavioral/Mental Health                                                                      |
| 8  | Food Security                                                                                 |
| 8  | Preliminary Prioritization Of 2020 Estes Valley Community Health and Other Needs              |
| 10 | Final Prioritization of 2020 Estes Valley Community Health Needs                              |
| 12 | Evaluation of 2017 Estes Valley Community Health Needs Assessment and Implementation Strategy |
| 13 | Conclusion                                                                                    |
| 14 | Appendix: Data Sources                                                                        |
| 15 | References                                                                                    |

Quantitative and qualitative data collection for this report was supported by the Colorado Health Institute

## **Executive Summary**

In the summer of 2020, Estes Park Health began work with Colorado Health Institute to produce an Estes Park Health 2020 Community Health Needs Assessment and an Implementation Strategy to address prioritized significant Estes Valley Health Needs over the next three years.

After quantitative analysis of available data and qualitative assessment of data from local organizations, key stakeholders, and community members collected in individual interviews and focus groups, the result identified and prioritized four community health needs:

1. Effectively address the complex community health needs identified in the Estes Park Health 2020 Community Health Needs Assessment through enhanced collaboration with local resources and active engagement with community patients and consumers.
2. Effectively address Estes Valley Community Mental Health needs.
3. Effectively address the healthcare needs of the Estes Valley's 35 to 64-year-old age group.
4. Development and implementation of Covid – 19 policy, procedure, and protocol navigation to facilitate community health needs.

Estes Park Health will develop implementation Strategies to address each of these Estes Valley health needs and will monitor the success of the implementation strategies over the next three years.

## **Overview of the Estes Park Health 2020 Community Health Needs Assessment**

In the summer of 2020, Estes Park Health contracted with the Colorado Health Institute to assist Estes Park Health to conduct Estes Park Health's 2020 Community Health Needs Assessment. As a Critical Access Hospital, a designation assigned to eligible rural hospitals by the Centers for Medicare and Medicaid Services, every three years, Estes Park Health is required by the federal Patient Protection and Affordable Care Act (ACA) to conduct a Community Health Needs Assessment and develop an Implementation Strategy to address health needs identified.

The purpose of the Estes Park Health 2020 Health Needs Assessment is to identify and prioritize significant Estes Valley community health needs, and then identify how those significant health needs are being addressed by existing community resources or will be addressed by new interventions.

## **Estes Park Health 2020 Community Health Needs Assessment Limitations**

The COVID-19 pandemic significantly constrained the usual approaches to obtaining community input for this assessment. While visitors to the Estes Valley represent a significant proportion of Estes Park Health's healthcare visits, limited information exists or is available to assess health care needs on this mobile, short stay population. As a result, visitors were not included in the Estes Park Health 2020 Community Health Needs Assessment.

## **Estes Park Health Organization Description**

Estes Park Health is a Critical Access Hospital that opened in 1975. Estes Park Health serves the Estes Valley community with inpatient and outpatient services through its 23-bed acute care facility, a level IV trauma center, and other services and facilities. Estes Park Health provides care for thousands of residents and tourists each year as the only hospital within a 30-mile driving radius. Estes Park Health offers residents a wide range of services for all phases of life, from its birth center to its Home Health and Hospice division. In May 2020, Estes Park Health opened a new Urgent Care Service line which improves access to care for immediate health care needs without the higher costs involved with Emergency Department visits.

## **Estes Valley Community Description**

The Estes Valley and the Town of Estes Park are located on the eastern border of Rocky Mountain National Park in Larimer County, Colorado. Rocky Mountain National Park officials estimate they have about 4.5 million visitors per year [1] with about 80% entering through the Town of Estes Park. This visitation results in significant seasonal fluctuation in the area's population. As of 2019 US Census data, about 13,500 residents lived in the Estes Valley year-round, with about 6,400 living in the Town of Estes Park itself. [2,3]

While out-of-valley visitors represent a significant portion of Estes Park Health's patient visits, especially in the summer months, limited data sets are available for this visitor population, so it was decided to focus the Estes Park Health 2020 Community Health Needs Assessment on the Estes Valley's permanent residents.

## **Estes Park Health 2020 Community Health Needs Assessment Methods**

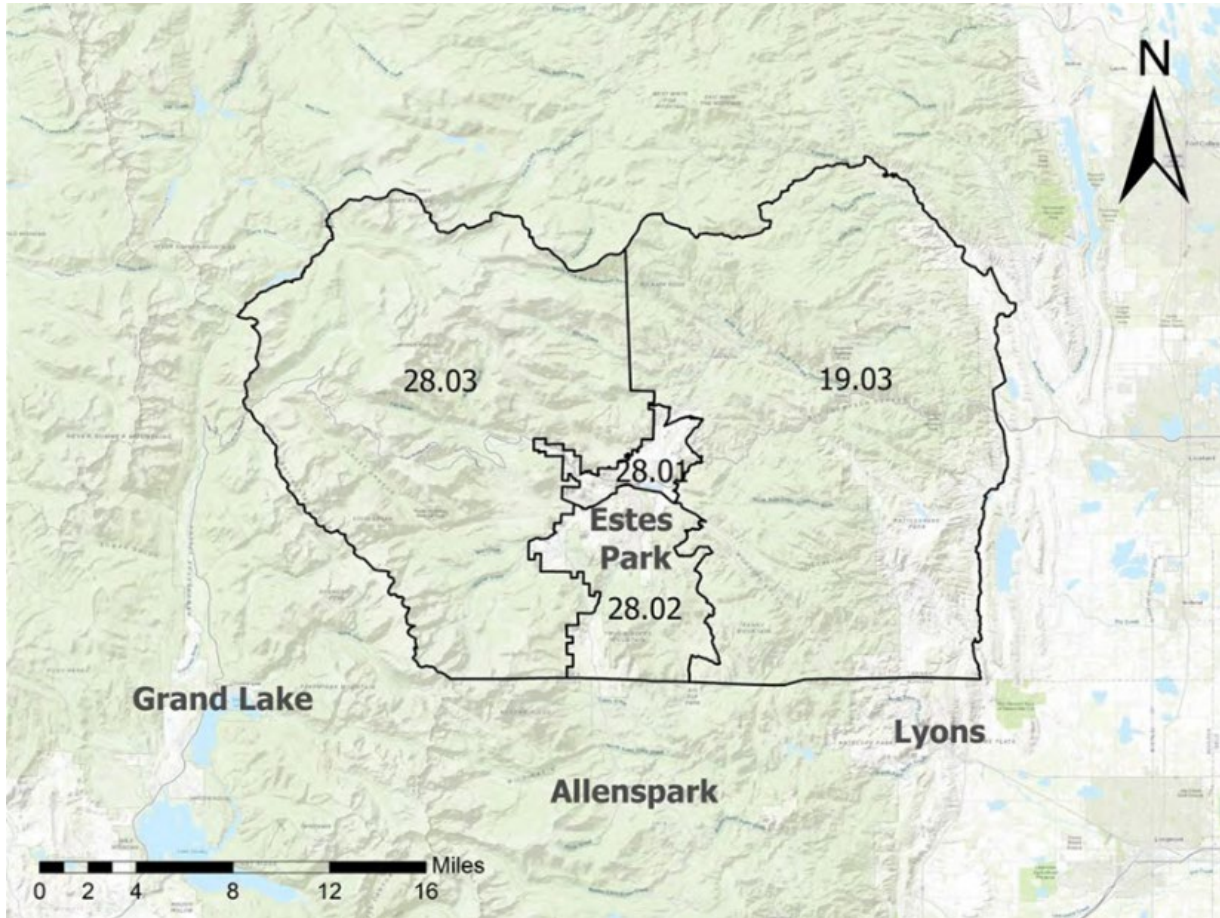
Estes Park Health worked with Estes Park Health staff, Public Health experts, key stakeholders, selected community members, and Colorado Health Institute to identify significant health needs for residents in the Estes Valley. Initial research included a quantitative analysis of data from Estes Park Health and data collected at the census tract level, when available, and at the Larimer County or Health Statistics Region (HSR) level when census tract data were not available. Estes Park Health provided 2019 and 2020 payer mix data and Hospital Consumer Assessment of Healthcare Providers and Systems (HCAHPS) survey data from 2019 and 2020 to help inform the assessment.

Please see Table 5 and Table 6 in the Appendix for a complete list of data sources used to inform this Community Health Needs Assessment.

Data sources for quantitative analysis were selected based on public availability, representation of trends in local health needs, and descriptions of population demographics. The quantitative data analysis of US Census data focused on the weighted average of four census tracts: 28.01, 28.02, 28.03,

and 19.03, which include the town of Estes Park and surrounding areas defined as the Estes Valley (please see Map 1).

Map 1. Census Tracts Included in the Estes Park Health 2020 Community Health Needs Assessment Quantitative Data Analysis



Estes Park Health and Colorado Health Institute also interviewed selected local leaders, residents, and stakeholders about the most pressing issues in the community. Seven key informant interviews and two community focus groups were conducted between the middle of August and early September 2020. Please see Table 5 in the Appendix for a list of key informant interviewees and focus groups. Qualitative data derived from interviews and focus groups provided important supplemental information for the Estes Park Health 2020 Community Health Needs Assessment.

### **Estes Valley Demographics (Table 1)**

The Estes Valley area’s population differs from that of Larimer County and the State of Colorado in several ways. The Estes Valley’s median age is higher, more residents have served in the military, fewer residents identify as Hispanic/Latinx, and a higher proportion of people are living in poverty.

**Table 1. Demographic Data for the Estes Valley Community, Larimer County, and Colorado, 2018 [2]**

|                                               | Estes Valley | Larimer County | Colorado   |
|-----------------------------------------------|--------------|----------------|------------|
| Adults ages 65+                               | 29.3%        | 15.7%          | 13.4%      |
| Youth under age 18                            | 13.1%        | 19.6%          | 22.8%      |
| Youth under age 5                             | 3.2%         | 5.2%           | 6.1%       |
| Households with children under age 5          | 24.1%        | 26.5%          | 22.9%      |
| Median age                                    | 56.2 years   | 35.9 years     | 36.6 years |
| Veteran population                            | 11.2%        | 7.7%           | 8.9%       |
| Non-Hispanic/Latinx White                     | 91.5%        | 82.5%          | 68.3%      |
| Hispanic/Latinx                               | 6.5%         | 11.7%          | 21.4%      |
| % residents with incomes at or below 100% FPL | 19.2%        | 11.8%          | 11.1%      |
| % residents with incomes at or below 200% FPL | 32.1%        | 26.9%          | 26.9%      |

FPL = Federal Poverty Level

## Age

29.3% of Estes Valley residents are over 65. The median age of Estes Valley Residents is 56, older than Larimer County’s median age of 39.5 years and the State of Colorado’s median age of 36.6 years.[2] The Estes Valley’s proportion of adults over the age of 65 has increased over the past 10 years.

On the other end of the age spectrum, the Estes Valley’s younger population has declined slightly over the past 10 years. 13.1% of Estes Valley residents are under 18, which is lower than Larimer County (19.6%) and State of Colorado (22.8%) under-18 populations. [2]

Even with its relatively smaller proportion of residents under age 18, the proportion of households with young children in the Estes Valley (24.1%), Larimer County (26.5%), and the State of Colorado (22.9%) are comparable. [2]

## Veteran Status

The Estes Valley area has a slightly higher proportion of veterans (11.2%) than Larimer County (7.7%), and the State of Colorado (8.9%).[2] The Estes Valley area has two programs dedicated to supporting this population: American Legion Post 119 and Flinch Forward. Both programs provide services and resources to local veterans, who are more likely than the general population to experience post-traumatic stress and associated challenges related to their military service.[4]

## Ethnicity

Estes Valley is less ethnically diverse than Larimer County as a whole. 91.5% of Estes Valley residents are non-Hispanic/Latinx white, compared to 82.5% of Larimer County residents.[2] However, there is a growing Hispanic/Latinx population in certain parts of the Estes Valley

community. In census tract 28.02, which contains the town of Estes Park, over 12% of residents identify as Hispanic/Latinx, an increase from 5.9% in 2010.[2]

**Socioeconomic Status**

Estes Valley residents are more likely to live in poverty than residents of the State of Colorado. 19.2% of Estes Valley residents have an income below the Federal Poverty Level (\$26,200 for a family of four in 2020) [5], which is higher than the proportions of Larimer County residents (11.8%) and State of Colorado residents (11.1%).[2] 32.1% of Estes Valley residents have an income below 200% of the Federal Poverty Level (\$52,400 for a family of four)[5] compared to Larimer County’s at 26.9% and the State of Colorado also at 26.9%.[2] Research has shown an established link between poverty status and health outcomes, including an increased risk for chronic diseases among those with lower incomes.[6,7]

**Insurance Status (Table 2)**

Access to health insurance has increased in the region due to the State of Colorado’s expansion of Medicaid in 2014. Prior to the expansion in 2010, 13.5% of Colorado residents were uninsured. That number has been steadily decreasing. In 2018, 5.3% of Estes Valley residents were uninsured. [2] Simon, et al. (2017) found that having health insurance coverage increased access to medical care services, which could lead to better health outcomes.[8]

**Table 2. Insurance Trends in the Estes Valley, Larimer County, and State of Colorado [2]**

|                                | Estes Valley |      | Larimer County |      | State of Colorado |      |
|--------------------------------|--------------|------|----------------|------|-------------------|------|
|                                | 2010         | 2018 | 2010           | 2018 | 2010              | 2018 |
| Percent residents uninsured[9] | 9.1%         | 5.3% | 14.6%          | 9.7% | 13.5%             | 6.5% |

**Estes Valley Health and Wellness Status (Table 3)**

Compared to State of Colorado residents, a relatively higher proportion of Estes Valley residents self-report good general health. However, compared to residents of Larimer County, residents of the Estes Valley have relatively higher proportions of diabetes, heart disease, and overweight.

**Table 3. Health and Wellness Measures for the Estes Valley Community, Larimer County, and Colorado, 2018 [10]**

|                                                     | Estes Valley | Larimer County | Colorado |
|-----------------------------------------------------|--------------|----------------|----------|
| % residents report good or excellent general health | 89.9%        | 90.1%          | 85.9%    |
| % residents with diabetes                           | 6.4%         | 4.7%           | 7.0%     |
| % residents with heart disease                      | 3.5%         | 2.0%           | 2.7%     |
| % residents overweight or obese                     | 56.7%        | 43.5%          | 58.9%    |

|                                       |       |       |       |
|---------------------------------------|-------|-------|-------|
| % residents obese                     | 19.9% | 20.2% | 22.9% |
| % residents diagnosed with depression | 17.0% | 15.0% | 15.7% |

### General Health

89.9% of Estes Valley residents report their health as good or excellent, similar to 90.1% in Larimer County and 85.9% in the State of Colorado.[10] 6.4% of Estes Valley residents have diabetes, seemingly higher than the 4.7% and 2.0% for residents of Larimer County and seemingly lower than the State of Colorado’s 7.0%.[10] 3.5% of Estes Valley residents have heart disease compared to 2.0% for Larimer County and 2.7% for the State of Colorado. [10] 56.7% of Estes Valley residents are overweight or obese, a proportion higher than Larimer County’s 43.5%, but seemingly lower than the State of Colorado’s 58.9%. [10]

### Behavioral/Mental Health

17.0% of Estes Valley residents have received a depression diagnosis, seemingly higher than 15.0% for Larimer County and 15.7% for the State of Colorado.[10] Many Este Valley community members interviewed for this report talked about the need to address the community’s behavioral health challenges..

### Food Security

The Estes Valley and some surrounding areas are designated as having “low access” to food by the U.S. Department of Agriculture, meaning that at least one-third of the population lives more than one mile from a supermarket.[11]

### Preliminary Prioritization of Estes Valley Community Health and Other Needs

On October 2, 2020, the Estes Park Health leadership team considered a list of 13 community health and other needs summarized by Colorado Health Institute. The 13 health and other community needs were themes derived from analysis of demographic and health status data and from interview data with individuals and focus groups. (Please See Table 4)

**Table 4. Thirteen Health and Other Needs Identified During Initial Research Phase**

| Community Health Needs Prioritized | Community Health and Other Needs Not Prioritized |
|------------------------------------|--------------------------------------------------|
| 1. Behavioral Health               | 1. Child Care                                    |
| 1. Collaboration                   | 2. Cost of Care                                  |
| 2. Older Adult Health              | 3. COVID-19 Impacts                              |
| 3. Pediatric and Family Services   | 4. Housing                                       |
| 4. Quality of Care                 | 5. Nutrition and Wellness                        |
| 5. Surgery                         | 6. Transportation                                |
|                                    | 7. Trust and Reputation                          |



Estes Park Health, with input from Colorado Health Institute, used the following criteria to preliminarily prioritize health needs from the list of 13 topics:

1. The health need must impact the health or safety of Estes Valley residents.
2. Addressing the health need must be feasible in light of Estes Park Health's future financial viability.
3. Estes Park Health must have the ability to directly impact the health need.
4. At least one of the following must be true:
  - 4.1. Indicators related to the health need are below the state or county benchmarks.
  - 4.2. The issue was identified by the Larimer County Public Health Department as a health need for the region.
  - 4.3. The health need was highlighted frequently during key informant interviews and focus group discussions.

Estes Park Health applied these criteria as they discussed each of the 13 topics in a session facilitated by Colorado Health Institute. Estes Park Health preliminarily selected six health-related needs as priorities for Estes Park Health to address over the next three years:

1. Behavioral health services and community engagement.
2. Collaboration between Estes Park Health and community organizations and stakeholders.
3. Older adult health services and supports.
4. Pediatric and family services to meet the health needs of children and families.
5. Quality of care provided at Estes Park Health.
6. Surgery as a growing service line, including the range of services provided to patients.

Upon further discussion, Estes Park Health chose to make "quality of care" and "collaboration" subsections of each of the other prioritized health needs, recognizing that different strategies are needed to address and improve quality of care and collaboration efforts depending on the service line or health need.

Behavioral Health, Older Adult Services and Supports, Pediatric and Family Services, and Surgery were the four preliminary priority health needs selected for the 2020 Community Health Needs Assessment.

The following is the reasoning for excluding the seven health and other community needs from the preliminary prioritization:

1. Child Care: It is not feasible for Estes Park Health to independently address this need. Other community resources (i.e. Town Family Advisory Board, EDC Childcare Committee) are working to address this need.
2. Cost of Care: It is not feasible for Estes Park Health to independently address this issue. There are initiatives at the State of Colorado and Federal levels that are attempting to address this issue.
3. COVID-19 Impacts: It is not feasible for Estes Park Health to independently address this need. There are multiple initiatives at the County, State, and Federal levels attempting to address this health need.

4. **Housing:** It is not feasible for Estes Park Health to independently address this need. Other community resources (i.e. Town Housing Authority) are working to address this need.
5. **Nutrition and Wellness:** It is not feasible for Estes Park Health to independently address this health need. There are other community resources (i.e. Crossroads, Larimer County) that are attempting to address this need.
6. **Transportation:** It is not feasible for Estes Park Health to independently address this need. Other community resources (i.e. Town Transportation Advisory Board, Via Mobility Services) are working to address this need.
7. **Trust and Reputation:** This issue was determined to be a part of all other initiatives to address significant Estes Valley Community Health Needs and so did not need to be a separate priority.

### **Final Prioritization of Estes Valley Community Health Needs**

Following the preliminary prioritization of Estes Valley Community Health Needs on October 2, 2020, the Estes Park Health Senior Leadership Team decided in April of 2021 that additional discussion and prioritization of Estes Valley Community Health Needs was needed, and that additional discussions with Estes Park Health leadership and Medical Staff would further refine the Community Health Needs prioritization.

The health needs that were preliminarily prioritized in October 2020 and were not included in the final prioritization were the following along with the reasoning for not including them in the final prioritization:

1. **Older adult health services and supports.** This is an important Estes Valley Community Health Need and it is being currently addressed through the Estes Park Health Internal Medicine and Family Practice physicians in the Estes Park Health Clinic, through the Specialty Clinic service offerings (ex: Cardiology, Neurology, Dermatology, Ophthalmology, etc.), Estes Park Health's Home Health, Home Assistance, and Hospice Services, and through other community resources like the Good Samaritan Society Estes Park Village with independent and assisted senior living facilities. This need was adequately addressed.
2. **Pediatric and family services to meet the health needs of children and families.** Estes Park Health has Pediatric, Family Practice, and Obstetrics/Gynecology physicians in place to manage community health needs.
3. **Surgery.** Estes Park Health has recently converted from contract General Surgery services offered through Rural Physicians Group to hiring two General Surgeons to more effectively address the general surgery needs of the Estes Valley. Two Orthopedic surgeons are already in place to address the Orthopedic Surgery needs of the Estes Valley Community. This need was considered to be adequately addressed.

As a result of the final prioritization discussions in April and May of 2021, the final prioritized health needs were:

1. Effectively address the complex community health needs identified in the Estes Park Health 2020 Community Health Needs Assessment

- 1.1. **Action One:** Re-establish a community health planning group like the Rural Estes Alliance for Community Health to create a more cohesive and collaborative community health planning effort. This objective would task multiple Estes Valley health organizations to devise, develop and implement plans that address complex Estes Valley Community Health Needs.
  - 1.1.1. **Background:** The Community Health Needs Assessment conducted by Colorado Health Institute identified many complex community health issues, for example, strengthening community mental health delivery mechanisms and integrating behavioral health with primary care. Creating clinical delivery mechanisms that facilitate positive change for community health issues requires significant resources. Additionally, the challenges identified will require collaborative action to enact solutions resulting in positive, permanent change. A community collaboration group working these issues has a higher likelihood of achievement and success using combined personnel expertise, intellectual resources, and potential pooling of organizational financial resources on strategies deemed as priorities.
- 1.2. **Action Two:** Engage health care patients and consumers in a meaningful way with their Healthcare and Healthcare choices
  - 1.2.1. **Background:** One conclusion from the experience of conducting the Estes Park Health 2020 Community Health Needs Assessment is that Estes Valley patients and consumers are interested in identifying our community's health care challenges. Further, community members are interested in contributing to potential solutions for identified health need challenges. Estes Park Health will initiate ongoing and meaningful conversations with Estes Valley patients and consumers. These conversations will address how to accomplish the overall goal of improving patient and consumer experience and improving the health of our Estes Valley community. This effort will be consistent with contemporary legislation that has prioritized patients and consumers and brought them and their desires to the forefront of health care. Furthermore, generational changes are also driving healthcare into a patient-and consumer-centered focus. Developing effective strategies for engaging patients and consumers is essential to Estes Park Health's future effectiveness, vitality, and sustainability. These efforts will be much more successful if consumers and patients from different genders, cultural backgrounds, income levels, and occupations are involved in the conversations to continue to evolve Estes Park Health's approaches to addressing the Estes Valley's healthcare needs.
2. Effectively address Estes Valley Community Mental Health needs.
  - 2.1. **Action:** Expand and strengthen the Estes Valley's Community Mental Health programming.
    - 2.1.1. **Background:** The Estes Park Health 2020 Community Health Needs Assessment findings, conversations with community leaders, and conversations with Estes Valley residents and Estes Park Health healthcare providers have all indicated that mental health and community mental health delivery systems are limited and not meeting community needs at the present time. Rural mental health delivery models in Colorado and other states can serve as idea factories to facilitate better mental health programming. Community health partnerships via their individual funding mechanisms, expertise, and other organizational relationships can work together to devise and implement prevention programs, establish

innovative delivery models – *like telehealth* – and work toward clinical integration with other types of care to build the capacity of mental health systems to serve the Estes Valley.

3. Effectively address the healthcare needs of the Estes Valley 35 to 64-year-old age group who represent 42.7% of the Estes Valley population in the most recent US Census data. [2]
  - 3.1. Action:** Complete medical staff development planning (MSDP) that considers the Estes Valley population and implement plans during the next three years that support enhanced medical services to the 35 to 64-year-old age cohort.
    - 3.1.1. **Background:** As described earlier, Estes Park Health has programs that specifically address the healthcare needs of children and young families, and the 65+ year old population in the Estes Valley. The healthcare needs of Estes Valley residents in the middle of the Estes Valley’s age distribution, those 35 to 64 years old, need to be more thoroughly assessed to determine how their healthcare needs are either being addressed and can be addressed more effectively.
4. Development and implementation of Covid – 19 policy, procedure, and protocol navigation to facilitate community health needs.
  - 4.1. Action:** Engage multiple planning agencies including Estes Park Health staff, physicians, City of Estes Park, and other community health care entities to devise, develop and implement plans that support Covid – 19 mitigation.
    - 4.1.1. **Background:** Since early 2020, the community of Estes Park has been working to mitigate the impacts of the coronavirus on the inhabitants of the Estes Valley. Much time has been invested in policy, procedure, and protocol to navigate and mitigate the spread of Covid – 19. Significant work with respect to items like infection control protocol advancement, and inoculation will remain important and thus require time and attention during the next several months.

## **2017 Estes Valley Community Health Needs Assessment and Implementation Strategy**

The 2017 Estes Valley Community Health Needs Assessment report by Vertical Strategies on page 12 states that the following three Estes Valley health needs were identified as “most pressing:”

1. Improve mental health services, while decreasing community substance abuse
  - 1.1. Actions taken since 2017: Estes Park Health has implemented services to provide outpatient mental health counseling via a Nurse Practitioner. Additionally, EPH has some capacity to provide inpatient mental health support, as well as, ability to provide some emergency department mental health assessment and/or counseling.
  - 1.2. Actions taken since 2017: To decrease community substance abuse, Estes Park Health has initiated programs aimed at providing therapeutic services that reduce opioid use and attempt to taper pain medication use. Additionally, EPH has established a more formal pain management program. Finally, providers at EPH have invested in training surrounding the management of opioid prescription for their patients.
2. Increase child, infant and elder care opportunities for all income levels.

- 2.1. Actions taken since 2017: Services for child, infant and elder care are available for all income levels at EPH. However, people resourcing and fiscal resourcing to create better services in these areas has not allowed significant achievements in these areas.
3. Increase access to health services for minority populations, specifically around race and ethnicity.
  - 3.1. Actions taken since 2017: EPH serves all who require medical attention including minority populations. Estes Park Health will continually strive to meet the needs of minority populations.

Other issues were identified as important in the Estes Park Health 2017 Community Health Needs Assessment, but Estes Park Health did not address them in the 2017 plan as “other groups had taken the lead on solutions.”

## **Conclusion**

In the summer of 2020, Estes Park Health began work with Colorado Health Institute to produce an Estes Park Health 2020 Community Health Needs Assessment and an Implementation Strategy to address prioritized significant Estes Valley Health Needs over the next three years.

After quantitative analysis of available data and qualitative assessment of data from local organizations, key stakeholders, and community members collected in individual interviews and focus groups, the result identified four community health needs:

1. Effectively address the complex community health needs identified in the Estes Park Health 2020 Community Health Needs Assessment through enhanced collaboration with local resources and active engagement with community patients and consumers.
2. Effectively address Estes Valley Community Mental Health needs.
3. Effectively address the healthcare needs of the Estes Valley’s 35 to 64-year-old age group.
4. Development and implementation of Covid – 19 policy, procedure, and protocol navigation to facilitate community health needs.

Estes Park Health has developed implementation Strategies to address each of these Estes Valley health needs and will monitor the success of the implementation strategies over the next three years.

## APPENDIX: DATA SOURCES

**Table 5. List of Key Informant Interviews and Focus Groups**

| Organization(s) or Stakeholder                                             | Format                  |
|----------------------------------------------------------------------------|-------------------------|
| Representative from the Town of Estes Park                                 | Key informant interview |
| Representative from the Estes Park School District                         | Key informant interview |
| Two representatives from the Larimer County Public Health Department       | Key informant interview |
| Representative from the Estes Park Economic Development Corp.              | Key informant interview |
| Representative from Visit Estes Park                                       | Key informant interview |
| Representative from the Estes Park Health Foundation                       | Key informant interview |
| Representative from the Estes Park Health Home Health and Hospice Division | Key informant interview |
|                                                                            |                         |
| Estes Park Health Staff and Salud Family Health Centers Staff              | Focus group             |
| Organizations that serve older adults and residents of Estes Valley *      | Focus group             |

\*Some data sources were reviewed for the analysis but not included in the final report.

**Table 6. Quantitative Data Analysis Data Sources**

| Topic                                                                         | Data Source                                                    | Year(s)          | Smallest Geography |
|-------------------------------------------------------------------------------|----------------------------------------------------------------|------------------|--------------------|
| Demographic, Housing, and Economic Characteristics                            | American Community Survey, 5-Year Estimates                    | 2010, 2015, 2018 | Census Tract       |
| Adult Physical and Mental Health                                              | Behavioral Risk Factor Surveillance System**                   | 2013 – 2017      | Census Tract       |
| Uninsured Rates                                                               | Colorado Health Access Survey                                  | 2009, 2019       | Census Tract       |
| Children’s Health                                                             | Health Kids Colorado Survey                                    | 2017, 2019       | County             |
| Birth and Death Rates                                                         | Colorado Department of Health and Environment Vital Statistics | 2014 – 2018      | Census Tract       |
| Liquor, Marijuana, and Tobacco Retailers                                      | Colorado Department of Regulatory Agencies                     | 2019             | Census Tract       |
| Needs of Older Adults                                                         | Community Assessment Survey for Older Adults                   | 2018             | County             |
| Needs of Pregnant Women                                                       | Pregnancy Risk Assessment Monitoring System                    | 2016 - 2018      | County             |
| Long-Term Support Service Facilities                                          | Colorado Department of Public Health and Environment           | 2019             | Census Tract       |
| Number of Licensed Health Providers                                           | Colorado Department of Regulatory Agencies                     | 2019             | Census Tract       |
| Physical Environment: Food Access and Air Quality                             | County Health Rankings                                         | 2020             | County             |
| Cancer Incidence                                                              | Centers for Disease Control and Prevention                     | 2013 - 2017      | County             |
| Clinical Care: Preventable Hospital Stays, Vaccinations, Mammogram Screenings | County Health Rankings                                         | 2020             | County             |
|                                                                               |                                                                |                  |                    |

|                                                                                 |                                                           |      |              |
|---------------------------------------------------------------------------------|-----------------------------------------------------------|------|--------------|
| Utilization: Emergency Room Visits, Provider Visits, and Appointment Wait Times | Colorado Health Access Survey                             | 2019 | County       |
| Behavioral Health Treatment Facilities                                          | Substance Abuse and Mental Health Services Administration | 2019 | Census Tract |

\*Some data sources were reviewed for the analysis but not included in the final report.

\*\*State- and county-level estimates are based on single-year estimates.

## REFERENCES

1. National Park Service, U.S Department of the Interior. (2020). "Integrated Resource Management Portal (IRMA)." <https://irma.nps.gov/STATS/Reports/Park/ROMO>
2. U.S. Census Bureau (2018). American Community Survey, Five Year Estimates. <https://data.census.gov/cedsci/advanced>
3. U.S. Census Bureau. (2019). "QuickFacts." <https://www.census.gov/quickfacts/fact/table/estesparktowncolorado/IPE120219>
4. Rand Health. (2015). "Current and Projected Characteristics and Unique Health Care Needs of the Patient Population Served by the Department of Veterans Affairs." [https://www.rand.org/pubs/research\\_reports/RR1165z1.html](https://www.rand.org/pubs/research_reports/RR1165z1.html)
5. U.S. Department of Human Services. (2020). "HHS Poverty Guidelines for 2020." <https://aspe.hhs.gov/poverty-guidelines>
6. Office of Disease Prevention and Health Promotion. (2020). "Poverty." <https://www.healthypeople.gov/2020/topics-objectives/topic/social-determinants-health/interventions-resources/poverty>
7. Centers for Disease Control (CDC). (2016). "Chronic Disease Disparities by County Economic Status and Metropolitan Classification, Behavioral Risk Factor Surveillance System, 2013." [https://www.cdc.gov/pcd/issues/2016/16\\_0088.htm](https://www.cdc.gov/pcd/issues/2016/16_0088.htm)
8. Simon, K., Soni, A., & Cawley, J. (2017). "The Impact of Health Insurance on Preventive Care and Health Behaviors: Evidence from the First Two Years of the ACA Medicaid Expansions." *Journal of Policy Analysis and Management*, Vol. 36(2), 390-417. <https://doi.org/10.1002/pam.21972>
9. Colorado Health Institute. (2019). "Colorado Health Access Survey (CHAS)." Retrieved October 2020. <https://www.coloradohealthinstitute.org/data>
10. Colorado Department of Public Health and Environment. (2018). "Behavioral Risk Factor Surveillance System and Child Health Survey (BRFSS)." <https://www.colorado.gov/pacific/cdphe/behaviorsurvey>
11. United States Department of Agriculture Economic Research Service. (2020). "Food Access Atlas." Retrieved October 2020. <https://www.ers.usda.gov/data-products/food-access-research-atlas/go-to-the-atlas/>